

Masterials

Pin (outer sleeve):Brass,
Clip(contact finger):Beryllium copper,heat treated
Plating(outer sleeve):

Tin plated : 1.25u"m/50u"nickel,5um/200u"Tin
Gold plated:1.25u"m/50u"nickel,full gold
Plating clip(contact):1.25um/50 u"nickel,gold or tin plating
Insulator body(black):PPS polyester UL94V-0

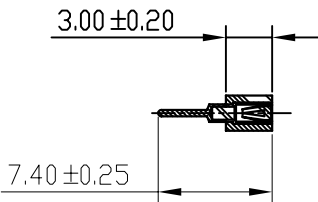
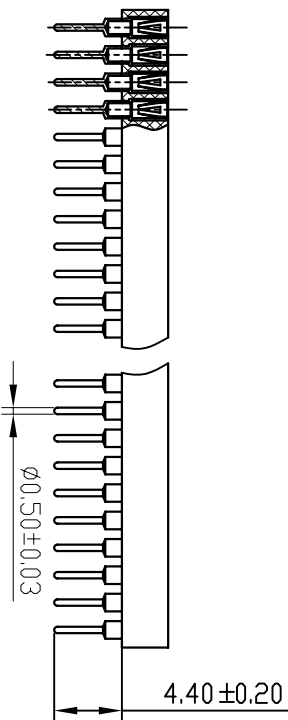
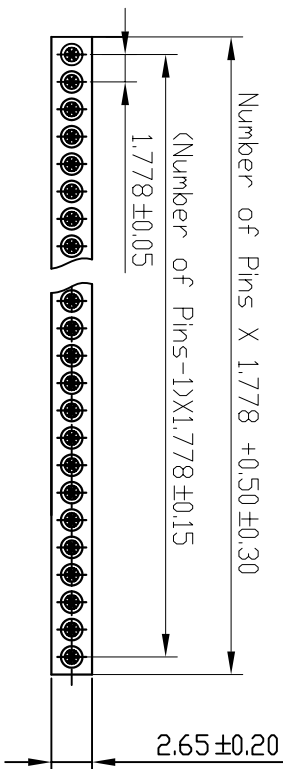
Electrical

Current rating:3 Amps/contact max.
Contact resistance: max 20mΩ
Dielectric resistance:Min 500MΩ

Ordering Information

3623 30 1 XX S XX 074 01

Insulator Type Code	No. of Pins	Contact Plating	Pin Length
1: Single row	1x40Pins	SN: Tin GO: Gold Flash G2: 2U"Gold G3: 3U"Gold G4: 5U"Gold G5: 10U"Gold S0: Gold Flash/Tin Standard: G0	074=7.4mm



OPERATION		DRAW		YTYuSheng		13.07.24		SCALE		FIT		PART NO.	
X.X	±0.30	X.XX	±0.20	X.XXX	±0.10	Angle	±3°	DIM	TOL	APPROVE	PROJ.	1/1	TITLE:
CHECK		A4		SHEET		1/1		3623301XXSXX07401		1.778x3.0 Machine Female Header 180° L=7.4mm			
DATE		MODIFICATION DESCRIPTION		CHANGE		DIM		TOL		3623301XXSXX07401			
REV		DATE		MODIFICATION DESCRIPTION		CHANGE		DIM		3623301XXSXX07401			

JIN 深圳市锦凌电子有限公司
SHENZHEN JINLING ELECTRONIC CO.,LTD
Tel: 86-755-2997-5806/5802 Fax: 86-755-2997-5992